

# MINATI<sup>1</sup>

H O M E S


**AFS**  
REAL ESTATE  
STAY AHEAD, INVEST SMART

**db**  
DUBRICKS  
POSSIBILITIES ARE LIMITLESS

---

By Januss Developers

Live exquisitely & Transcend the Mundane

A woman with long, dark, wavy hair is shown from the chest up, holding a large, white, sheer fabric aloft with both hands. She is looking upwards and to the right. The background is a bright, hazy sky. The image is framed by a green border on the left and a blue border on the right.

## Experience the Fusion of Style and Serenity

In a serene Dubai sanctuary, craftsmanship merges with lush landscapes, where meticulously crafted residences bask in radiant sunlight. Airy spaces dissolve into private oases, blurring boundaries and fostering tranquility amid nature's secrets and curated artistry.



## Vision of Januss

We aim to set new standards in modern living by seamlessly integrating luxurious craftsmanship, uncompromising quality, and practical functionality. Guided by deep customer understanding and strong ethics, we create innovative, sustainable designs that embrace tradition and modernity.











## An Ode to Grandeur

Minati Homes 1 epitomizes opulent sophistication in contemporary living, nestled amidst lush greenery. Flooded with natural light, these grand residences boast world-class architecture and exquisite interior artistry, offering unparalleled convenience at the core of Al Furjan's vibrant neighborhood.





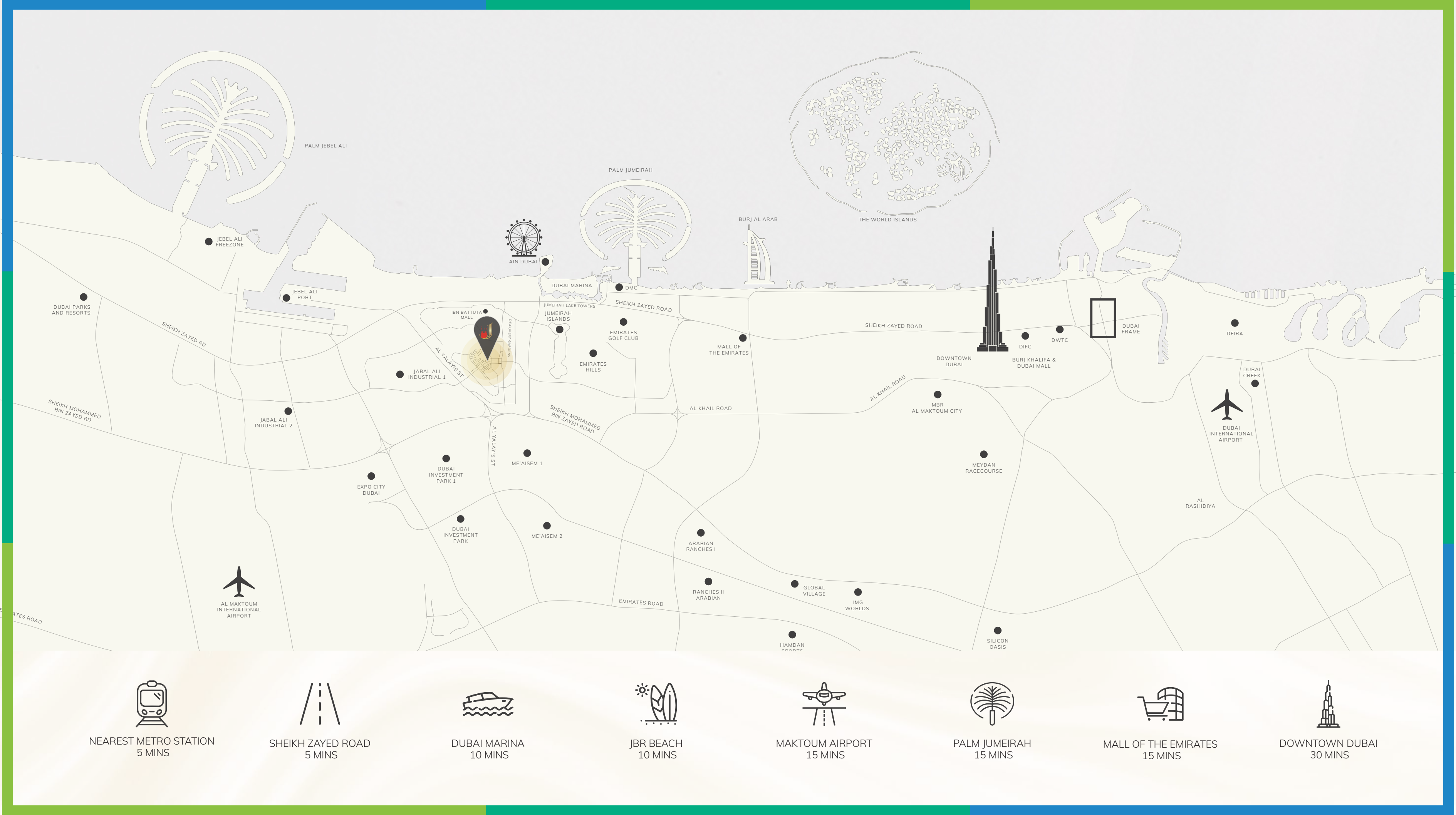


# Holistic Eco-conscious Living: Tranquility in Every Corner

Embark on a journey with us to a harmonious sanctuary, where indoor and outdoor spaces seamlessly integrate. Residents revel in abundant natural light and top-quality finishes, fostering a wholesome living experience amidst picturesque landscapes.







NEAREST METRO STATION  
5 MINS



SHEIKH ZAYED ROAD  
5 MINS



DUBAI MARINA  
10 MINS



JBR BEACH  
10 MINS



MAKTOUM AIRPORT  
15 MINS



PALM JUMEIRAH  
15 MINS



MALL OF THE EMIRATES  
15 MINS



DOWNTOWN DUBAI  
30 MINS



A woman with long, wavy reddish-brown hair is floating in a deep blue liquid, likely water. She is wearing a long, flowing white dress that billows around her. Her arms are outstretched, and her hands are open. She is looking upwards with a serene expression. The lighting is soft, creating a peaceful and ethereal atmosphere. The background is a deep, uniform blue, with some light reflecting off the surface of the liquid at the bottom.

Find a Place of Peace Within Yourself



# Alluring Amenities: Elevating Everyday Living

Compose a harmonious blend of productivity, leisure, and wellbeing, seamlessly woven into your lifestyle, crafting a masterpiece of home.





Make a Splash

## Family pool

Escape worries in our aquatic haven. Dive into crystal-clear water, each stroke a soothing rhythm. Unwind amidst lush greenery, soaking up serenity.









Unlock Your Potential and Vitality



## State-of-the-art Gymnasium

Wellness seamlessly integrated. High-energy workouts or mindful movement, our sleek design ignites motivation.





ATTITUDE  
IS EVERYTHING

FEEL  
THE  
BURN



Starlit Screenings, Poolside Magic



## Open Cinema by the pool

Enjoy starlit screenings at our open-air pool cinema, reclining under the stars as the water gently ripples. Let your imagination soar and make unforgettable memories.











Inspire Creativity and  
Promote Collaboration

## Multipurpose Room and Co-Working spaces

Each occasion celebrates joy, forging lasting memories. Escape the noise, and elevate your productivity in our sleek workstations and vibrant social zones.











Sizzle, Savor and Socialize

## Shaded Seating Area and Barbeque Pods

Fire up the grill and whip up culinary masterpieces in your own spacious BBQ pod. Invite friends and family for a festive gathering, enjoying the company and delicious food in a dedicated space.







## Pool deck, Sun beds and Canopies

Lounge in the expansive pool deck offering perfect blend of comfort and tranquility as you soak up the sun in style.

Unwind by the Poolside

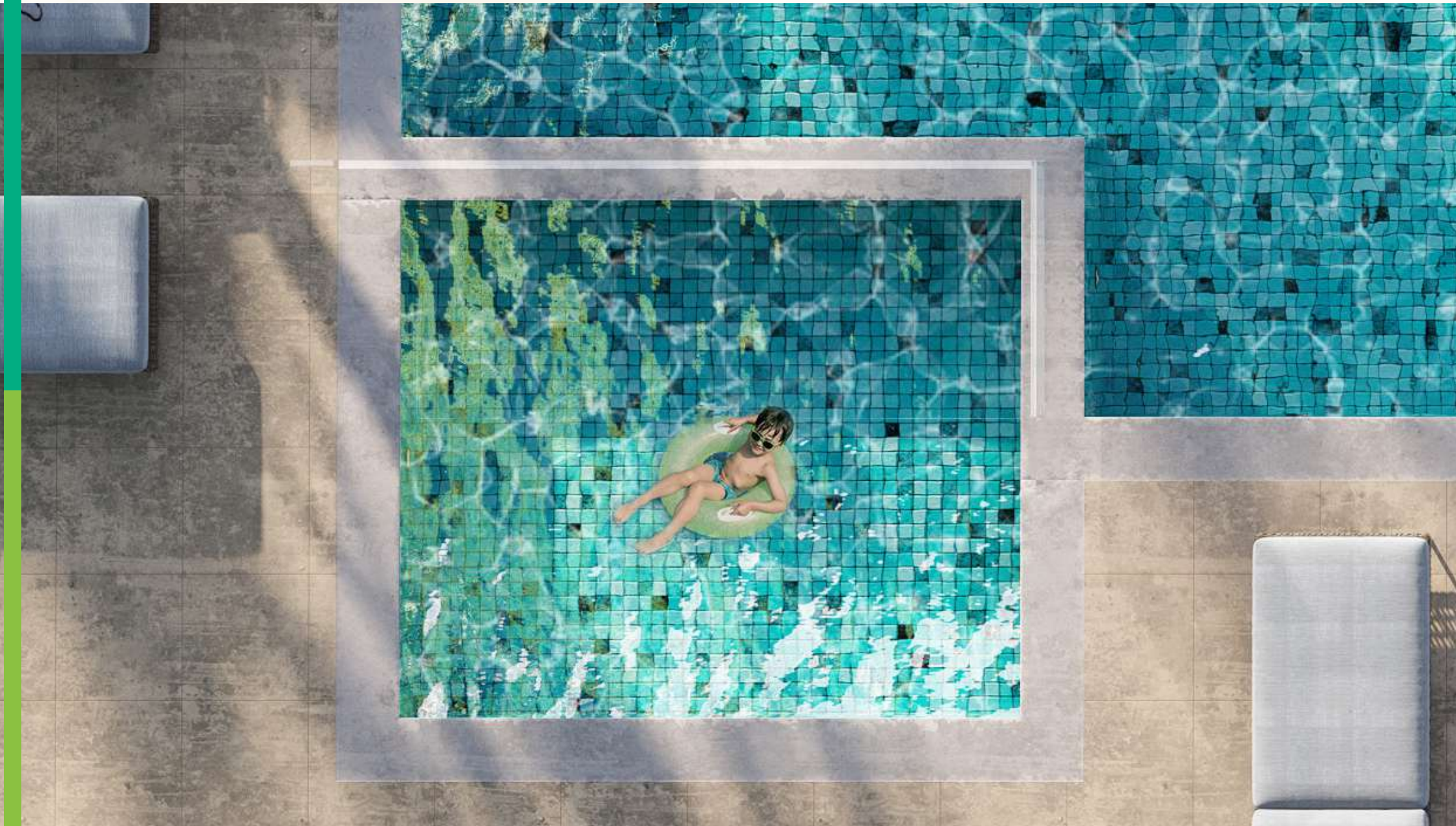


Slides, swings and laughter



## Kids' Play Area

Where excitement, boundless laughter and imaginations run wild, friendships bloom, and every moment is filled with joy.









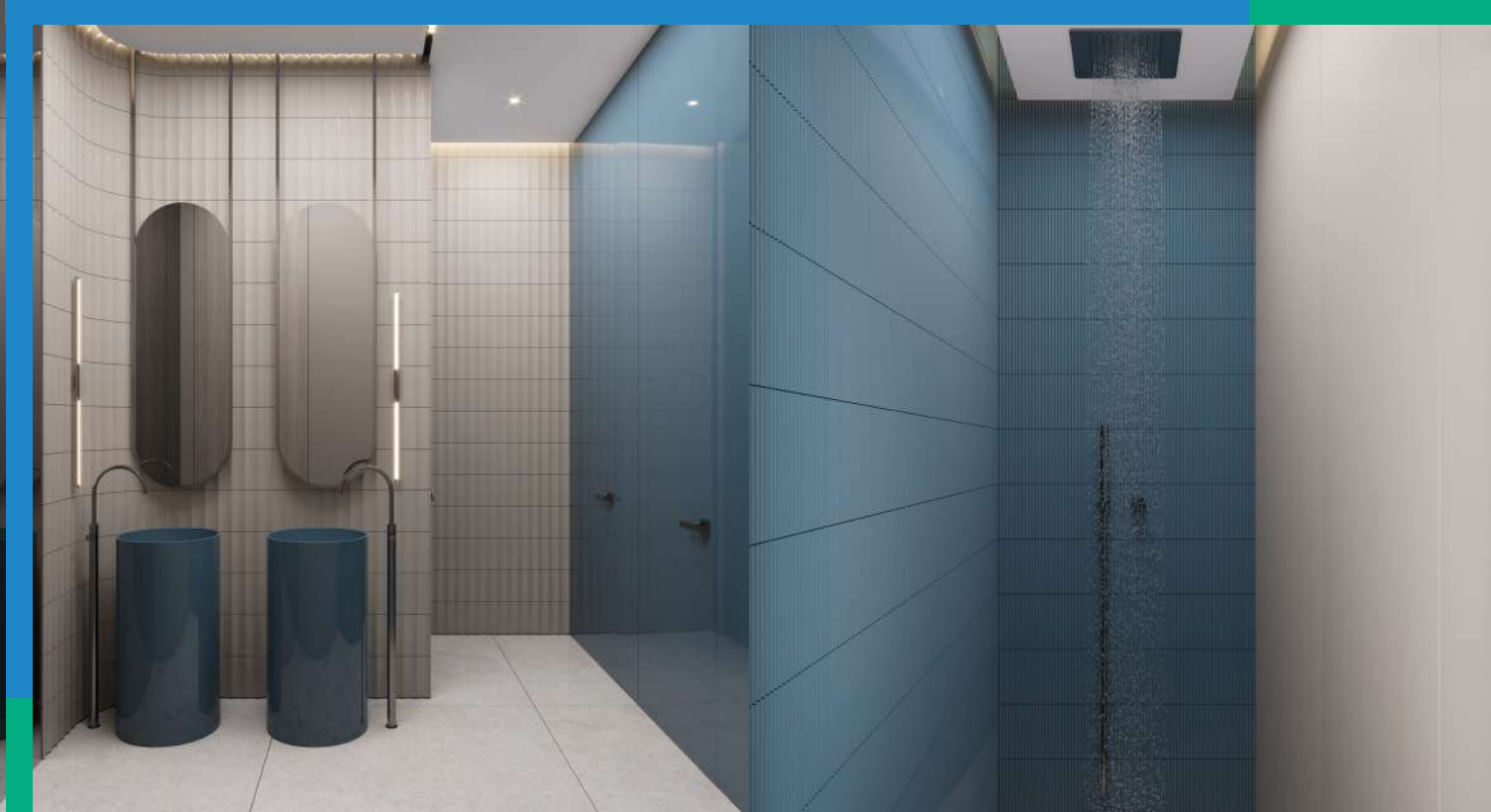
# His and Her Steam rooms

Indulge yourself as stress melts away, while therapeutic heat revitalizes your spirit, ensuring you emerge refreshed.



Relax, Revive and Rejuvenate



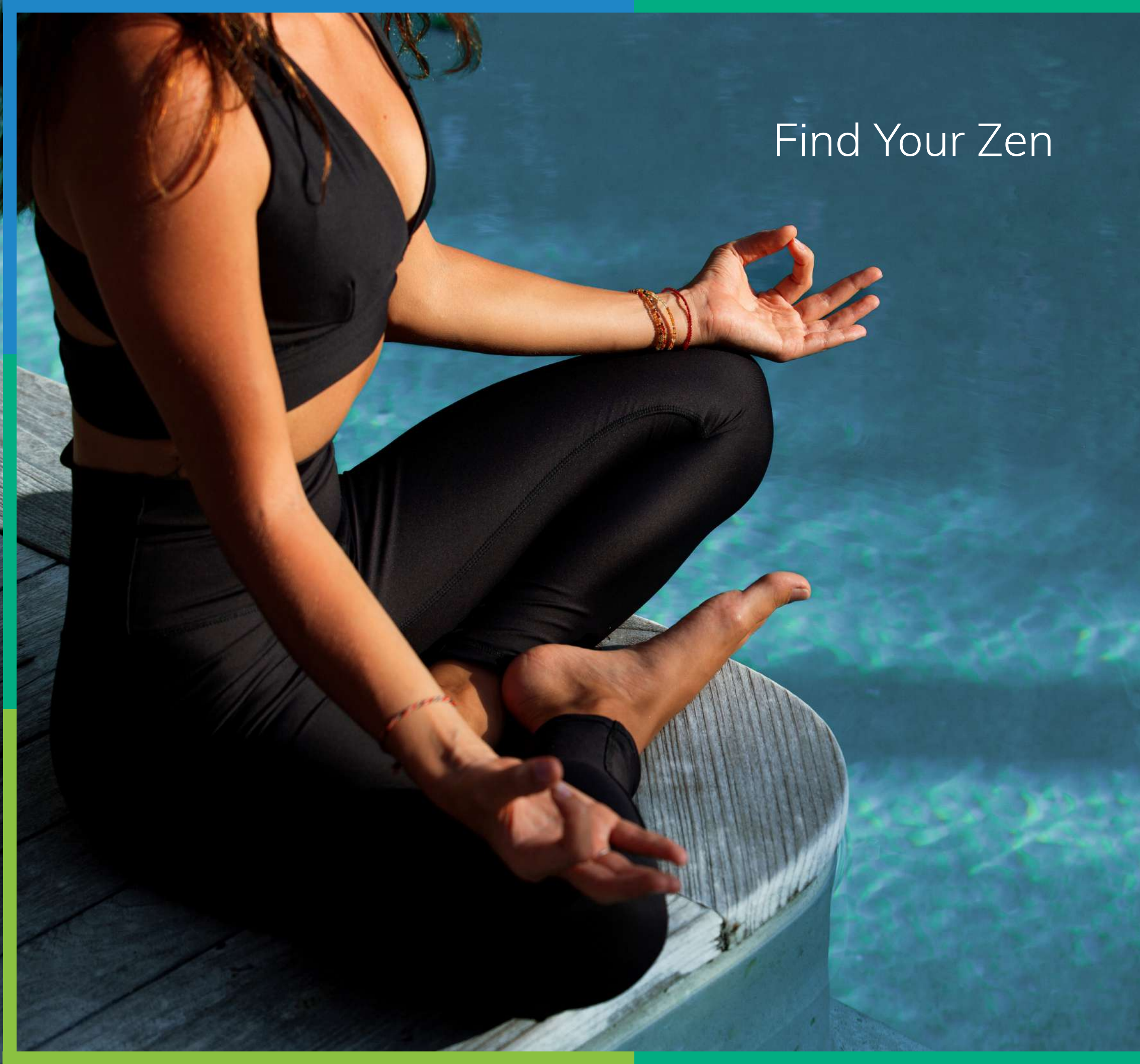


## Restrooms & Showers

## Lockers & Changing Rooms







Find Your Zen

## Shaded Yoga Areas

Find inner peace in our serene meditation gardens. Surrounded by nature's calm, escape the daily rush. Breathe. Be still. Reconnect with tranquility.



## Interiors and Apartment Features

Explore our one, two, and three-bedroom apartments, each designed for comfort and charm.

Uncover a space where authenticity thrives and growth abounds. Your Residence for a Life of Bliss, Community, and Infinite Potential.



## Holistic Elegance



## Chic Entrance and Lift Lobby

The lobby, with its delicate design, exudes modernity, tranquility, and warmth. Its soaring ceilings, plush seating, and tastefully chosen decor not only evoke a sense of simplicity but also speak to a commitment towards sustainability.















## Sophisticated and Welcoming

Our interiors set the tone for truly arriving in style. Sleek architectural elements are highlighted by trendy lighting, creating a visually stunning and inviting impression.











# Luxe Living & Redefined Modern Design

## Modern interiors and Premium finishes

Clean lines with a refreshing touch of sophistication: From minimalist design to refined finishes, discover a space that exudes timeless charm and understated luxury.







## Space Utilization and Layouts

From streamlined design to functional layouts, each detail is meticulously crafted to offer a lavish sanctuary. Explore architectural wonders and practical innovations, revealing fresh levels of elegance and coziness at every corner.



# Contemporary Kitchen layouts

Unleash your inner chef in a stylish space that inspires culinary creativity, from sleek countertops to state-of-the-art appliances.

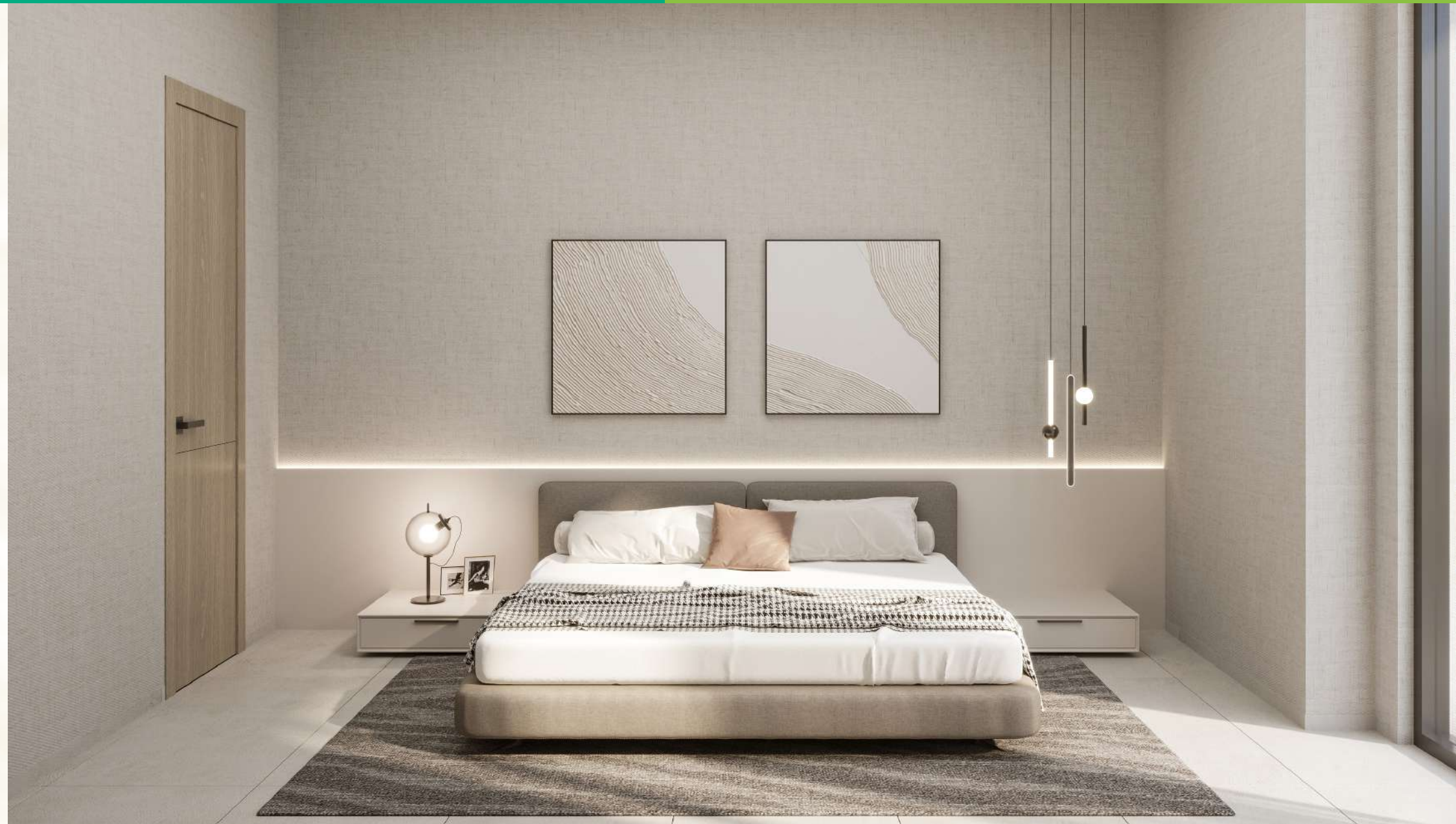








## Embrace Tomorrow's Automation Prowess



## Cutting-edge Smart Home Tech and Lighting Fixtures

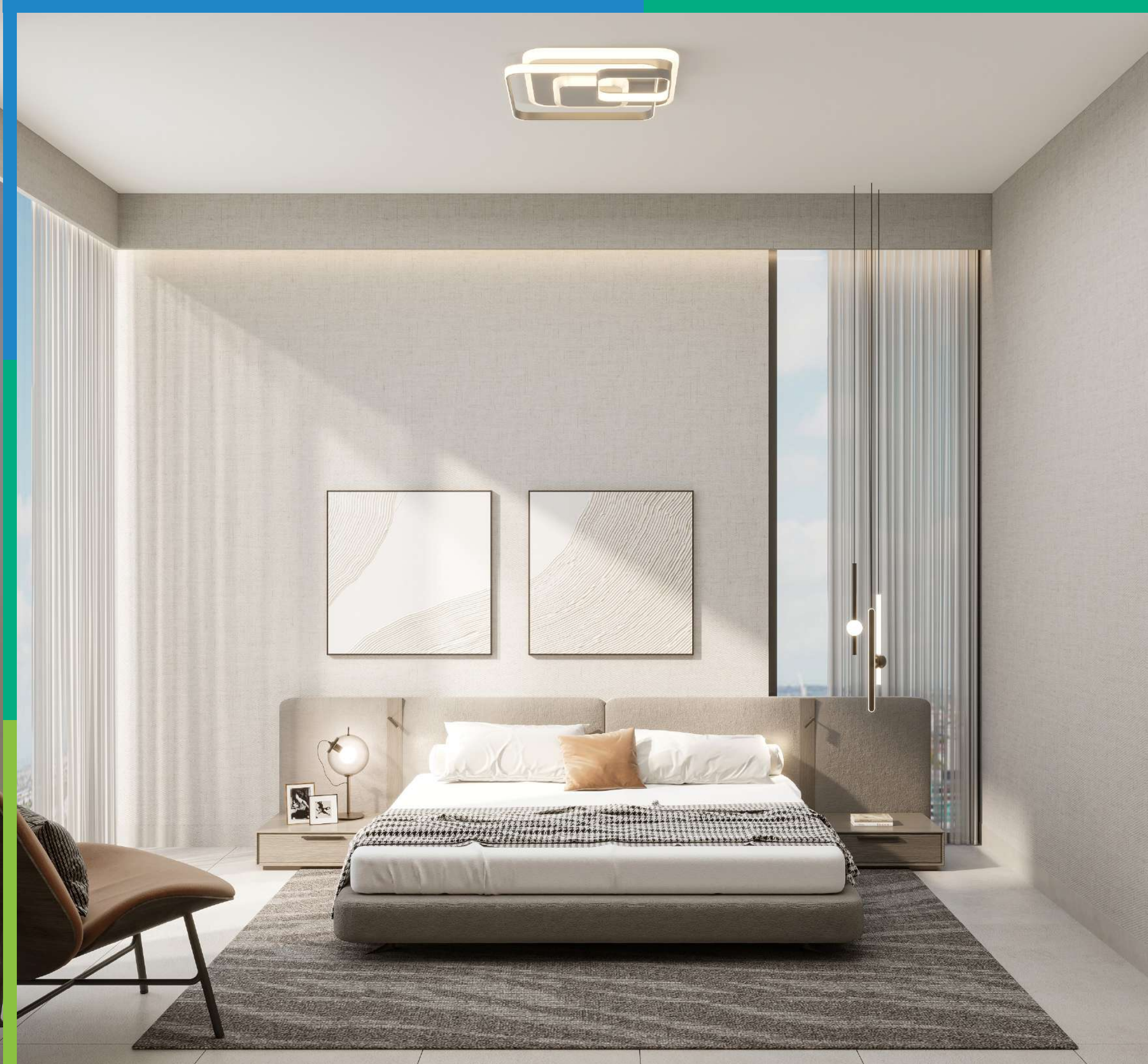
Step into the future of living where cutting-edge technology and seamless connectivity redefine how you experience your home.











## En-suite Bedrooms in Every Apartment

Each bedroom features its en suite for ultimate privacy and convenience, ensuring a luxurious and seamless living experience.





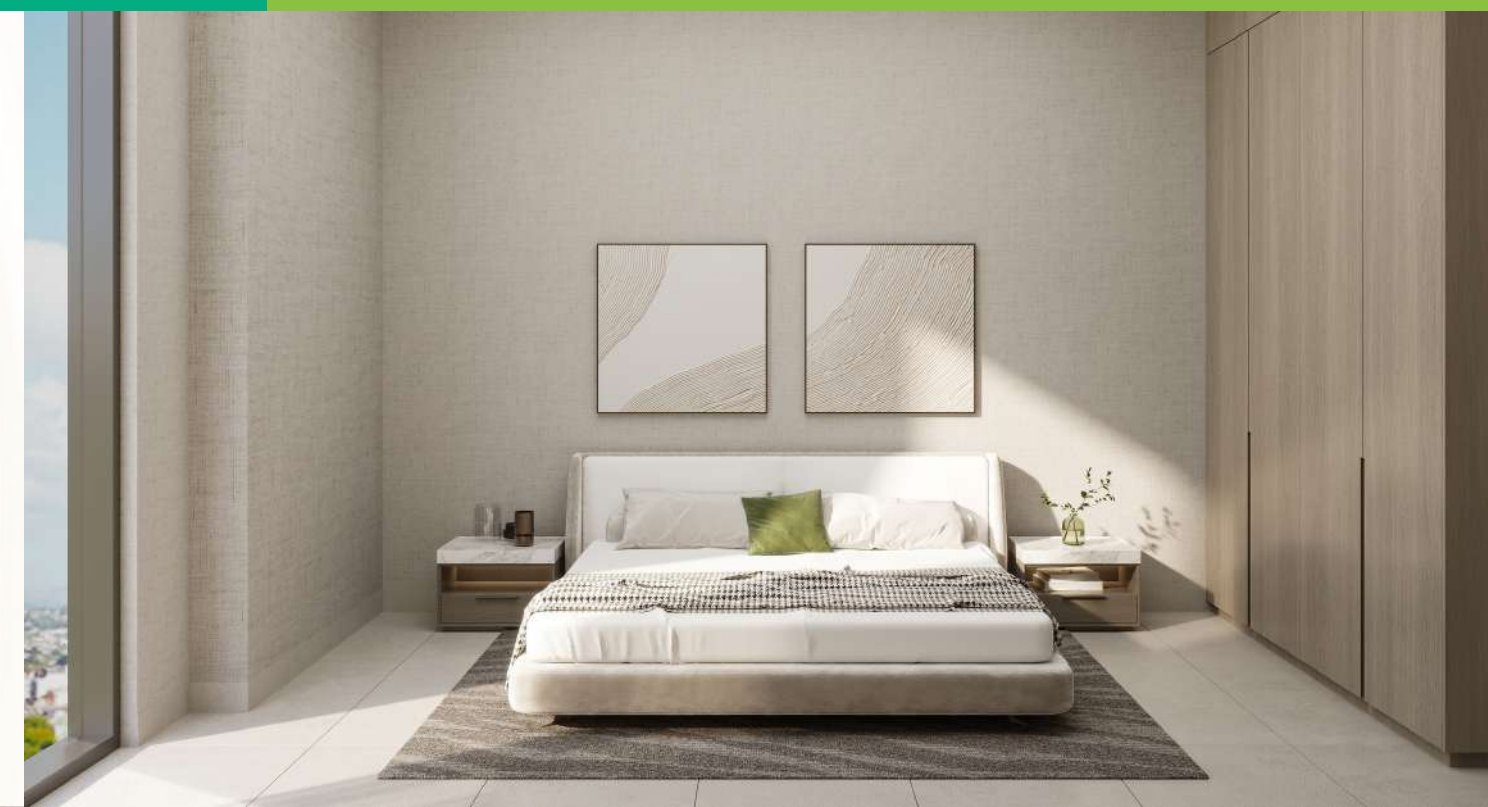
## Floor-to-Ceiling Windows

Living spaces bathed in abundant natural light create a bright and inviting atmosphere with panoramic views of sunsets and cityscapes.



## Ample wardrobe and Closet Spaces

Offering ample storage, from the generous wardrobes in the bedrooms to the Sleek Entryway Closets. Built-in shelving seamlessly integrates practical storage solutions throughout.



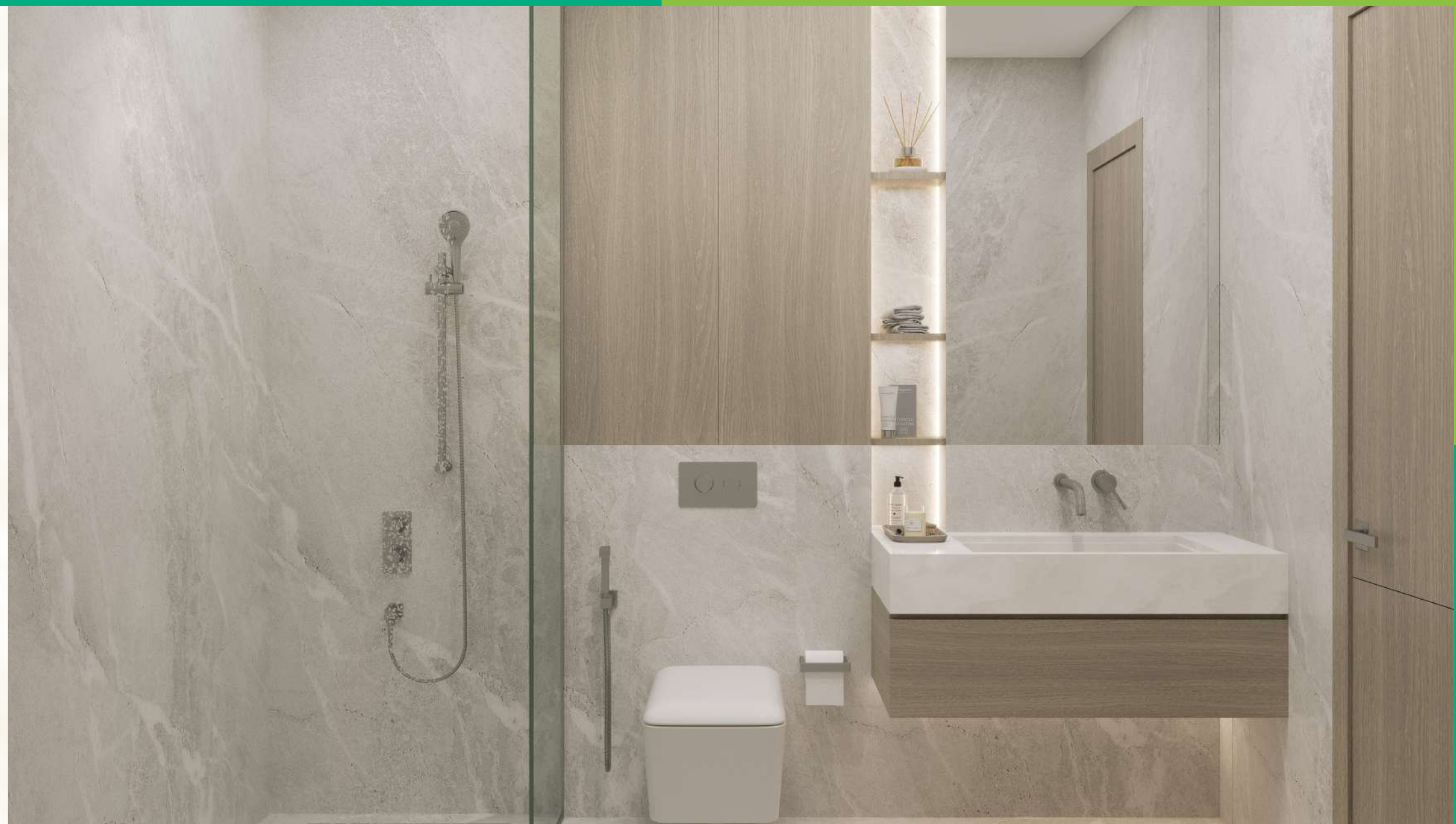
Fashionably Functional &  
Stylishly Organized







## Sleek Bathrooms in Serenity, Style and Comfort



## Bathroom, Powder & Laundry Rooms

Immerse yourself in our stylishly designed bathrooms, and the convenience of a powder room in every apartment, offering both elegance and comfort. Well-placed laundry rooms increase efficiency, ensuring laundry chores are swiftly handled.



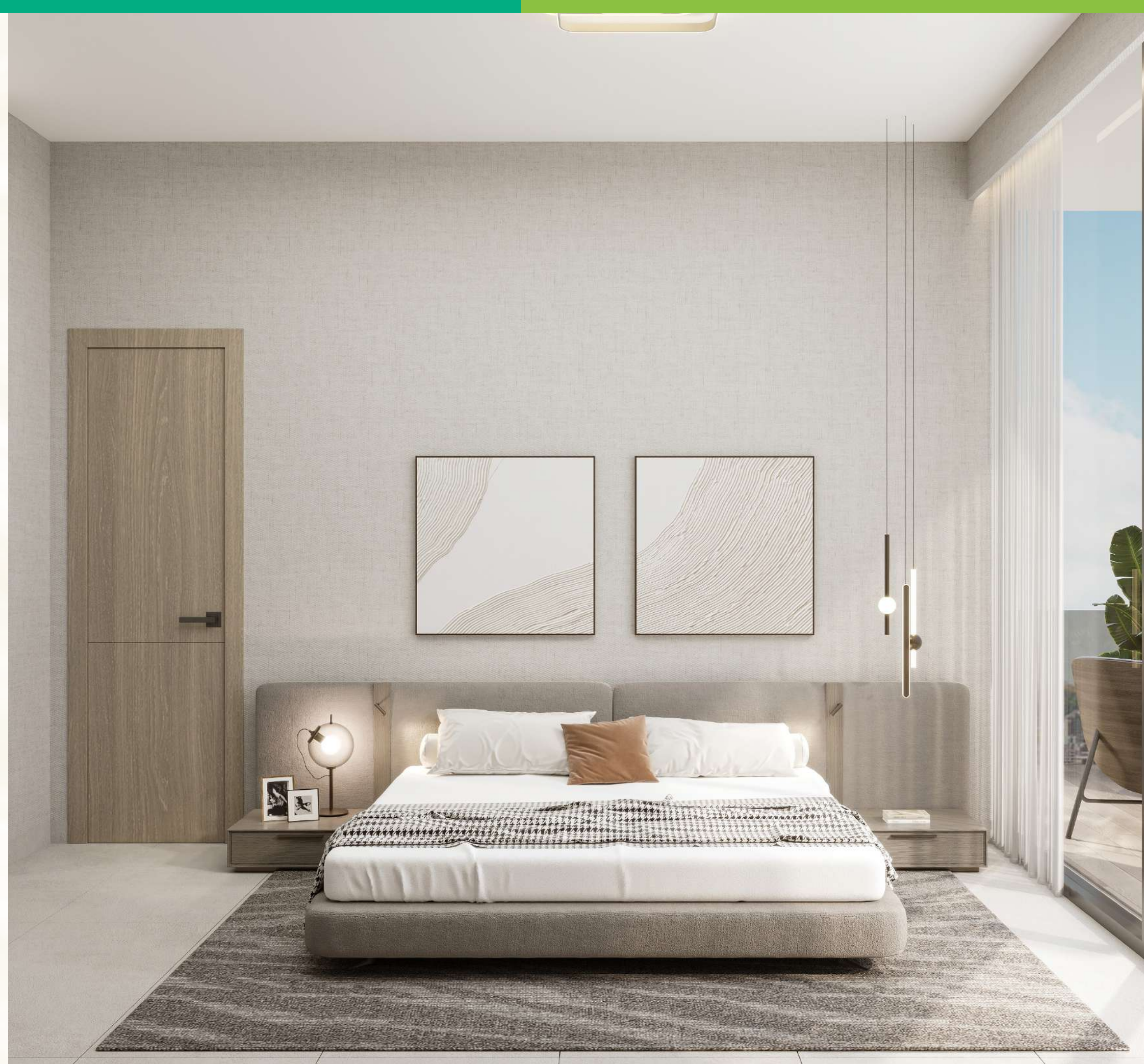






## Spacious Balconies & Terraces

With balcony access from both-the living room, and bedroom, residents enjoy seamless indoor-outdoor living. Louvers provide privacy and shade for a serene outdoor retreat.





# Materials and Specs

## General Specs

Glazed Porcelain Flooring  
Graded Fenomastic | Emulsion Paint  
Double-glazed tinted glass  
Branded Switches and Sockets  
Usage of Durable Materials

## Kitchen Specs

Premium Kitchen cabinetry  
Engineered Stone Countertops in Kitchen  
European Quality White Goods: Large Refrigerator  
Gas Hob, Cooker Hood, Built-in Oven and Washing Machine  
Dishwasher in selected layouts

## Bathroom Specs

Anti Slip Flooring in Bathrooms  
High-End Sanitary Ware and Fixures







## The City is Your Playground

### Al Furjan

Al Furjan, an energetic Dubai community, seamlessly blends city living with serene residential charm. Boasting diverse architecture, verdant landscapes, and a bustling town center, it promises a dynamic lifestyle. Emphasizing sustainability and community, Al Furjan strategically sits near the metro and SZR. Offering Community Centers, Parks, Shopping Malls, Supermarkets, Schools, Mosques, Hospitals, Hotels, and much more.



# Community Highlights



METRO



CLOSE TO SZR



EASY CONNECTIVITY



COMMUNITY CENTERS  
AND PARKS



SHOPPING MALLS



SUPERMARKETS AND  
RETAIL STORES



SCHOOLS AND  
NURSERIES



MOSQUES AND  
SHRINES



HOTELS AND  
RESTAURANTS



HOSPITALS AND  
CLINICS



BARS AND CAFES



PET-FRIENDLY  
NEIGHBORHOOD

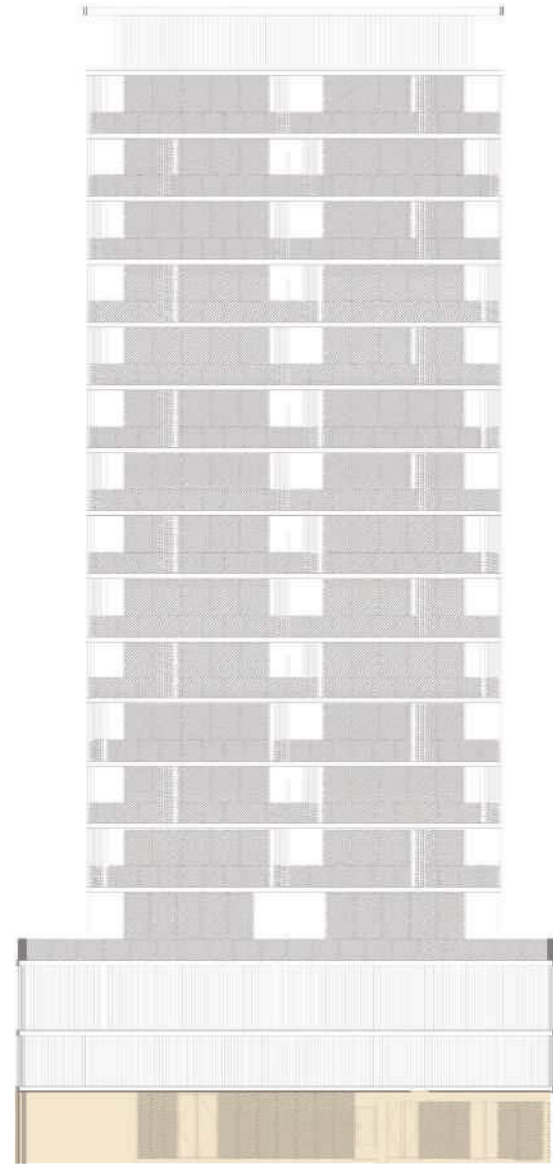




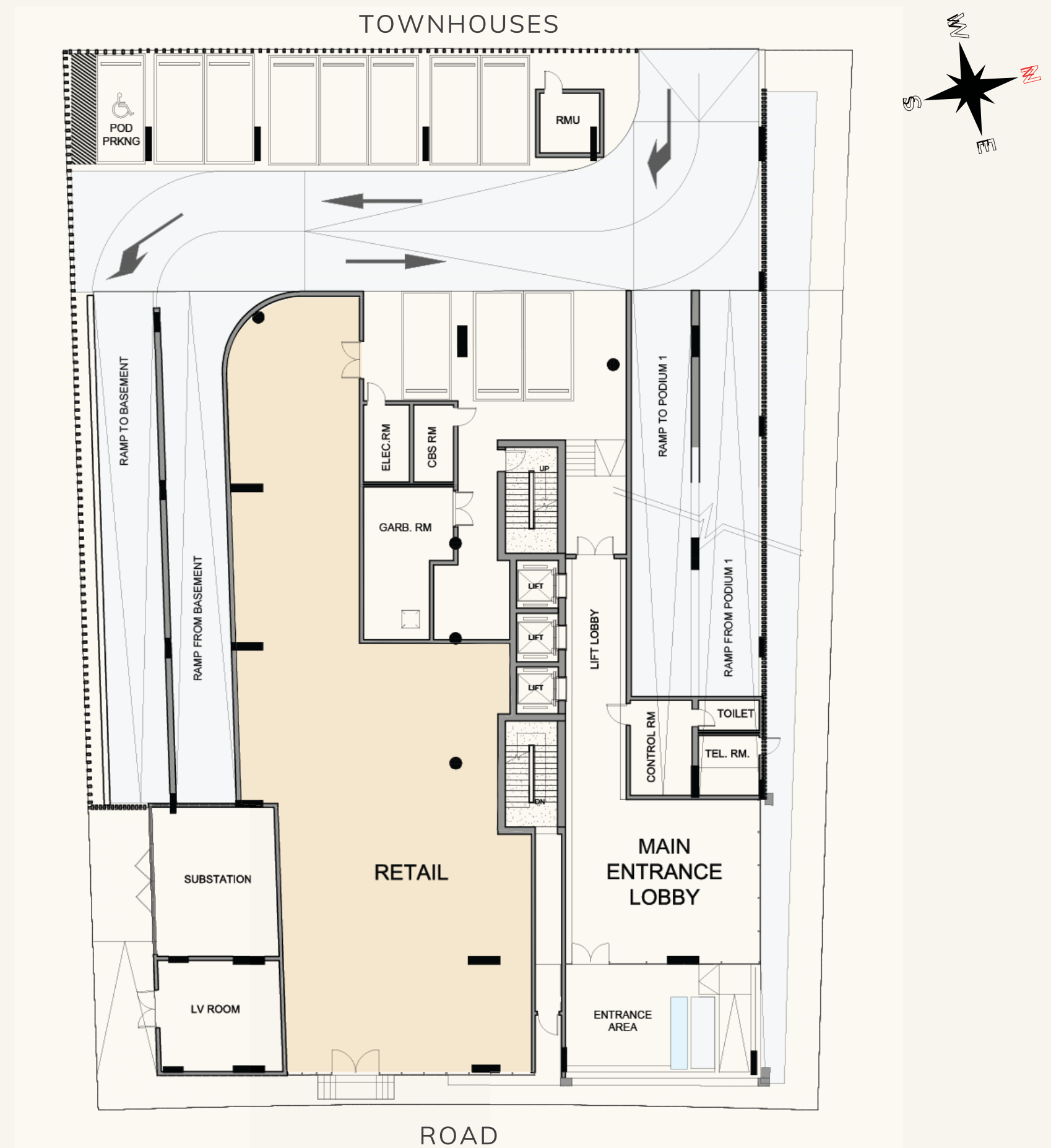


# FLOOR PLANS

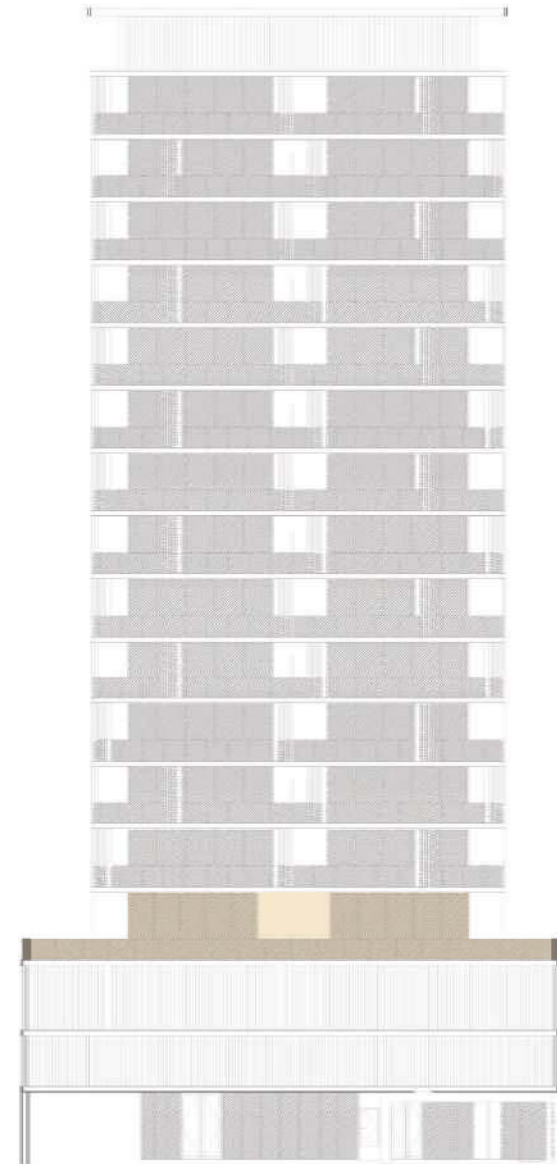




GROUND FLOOR







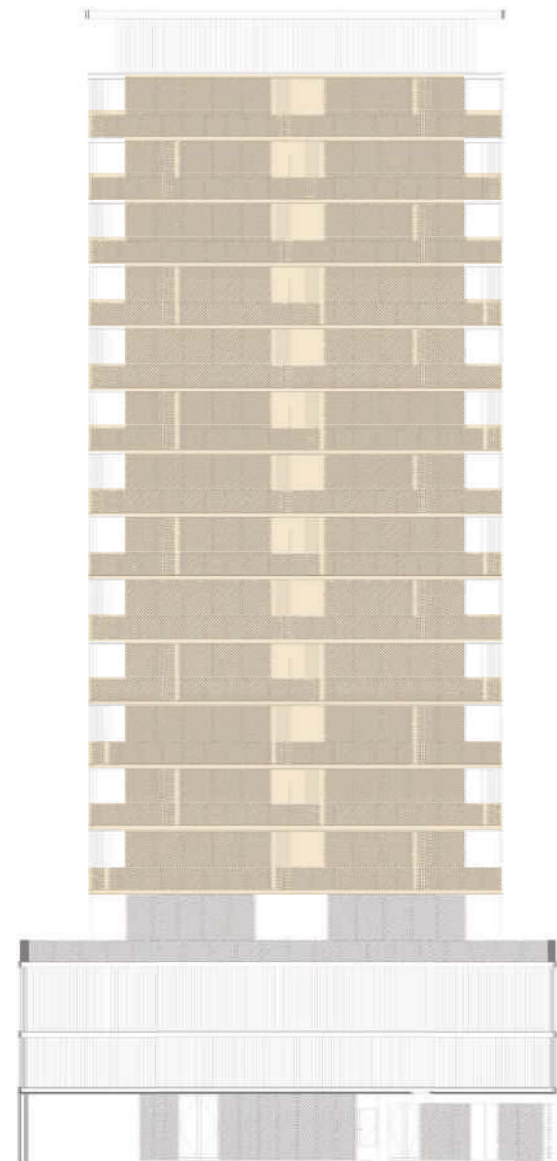
## FIRST FLOOR | AMENITIES



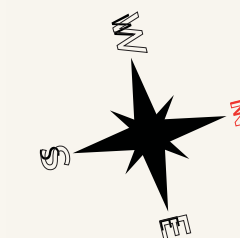


# MINATI<sup>1</sup> HOMES

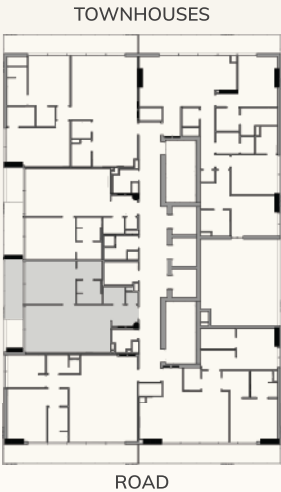
By JANUSS DEVELOPERS



TYPICAL FLOOR







| INTERNAL AREA | BALCONY AREA | TOTAL AREA   |
|---------------|--------------|--------------|
| 697.39 Sq.ft  | 94.18 Sq.ft  | 791.57 Sq.ft |

Layout Features

- Entryway Closet
- L-shape Kitchen
- Spacious Living Room
- Ensuite Bedroom
- Spacious Balcony
- Balcony Access from Living and Bedroom
- Views of Neighbourhood
- Lots of Builtin-Wardrobe
- Powder Room
- Laundry Room

ONE BEDROOM  
03 SERIES



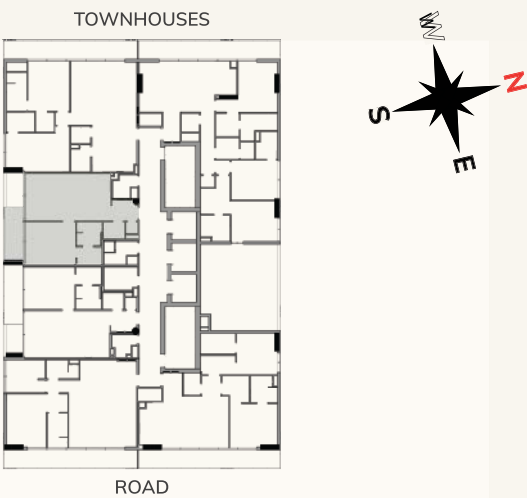


# MINATI<sup>1</sup> HOMES

By JANUSS DEVELOPERS







| INTERNAL AREA | BALCONY AREA | TOTAL AREA   |
|---------------|--------------|--------------|
| 690.07 Sq.ft  | 86.97 Sq.ft  | 777.04 Sq.ft |



Layout Features

- Entryway Closet
- L-shape Kitchen
- Spacious Living Room
- Ensuite Bedroom
- Spacious Balcony
- Balcony Access from Living and Bedroom
- Views of Neighbourhood
- Lots of Builtin-Wardrobe
- Powder Room
- Laundry Room

ONE BEDROOM  
04 SERIES









| INTERNAL AREA | BALCONY AREA | TOTAL AREA   |
|---------------|--------------|--------------|
| 918.8 Sq.ft   | 212.69 Sq.ft | 1131.5 Sq.ft |



Layout Features

- Entryway Closet
- Wide and Inviting Living Room
- Open plan Kitchen & Breakfast Countertops
- Powder Room with Shower
- Ensuite Bedroom
- Study Room with Window
- Views of Neighbourhood
- Lots of Builtin-Wardrobe
- Full Length Balcony
- Balcony Access from Living and Bedroom

ONE BEDROOM & STUDY  
02 SERIES



# MINATI<sup>1</sup> HOMES

By JANUSS DEVELOPERS







| INTERNAL AREA | BALCONY AREA | TOTAL AREA    |
|---------------|--------------|---------------|
| 1026.98 Sq.ft | 220.33 Sq.ft | 1247.32 Sq.ft |

Layout Features

- Entryway Closet
- Wide and inviting Living Room
- Spacious open plan Kitchen
- Powder Room
- Both Ensuite Bedrooms
- Lots of Builtin-Wardrobe
- Full Length Balcony
- Balcony Access from Living and Bedroom
- Views of Neighbourhood

TWO BEDROOM  
01 SERIES



# MINATI<sup>1</sup> HOMES

By JANUSS DEVELOPERS







| INTERNAL AREA | BALCONY AREA | TOTAL AREA    |
|---------------|--------------|---------------|
| 1133.76 Sq.ft | 210.97 Sq.ft | 1344.74 Sq.ft |

Layout Features

- Entryway Closet
- Spacious Living Room
- Open plan Kitchen & Breakfast Countertops
- Powder Room
- Both Ensuite Bedrooms
- Full Length Balcony
- Views of Sunset and Greenery
- Builtin-Wardrobe and Ample Storage Spaces
- Double Sink in Master Bedroom
- Study Room

TWO BEDROOM & STUDY  
05 SERIES

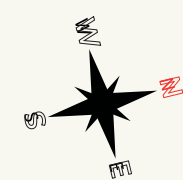
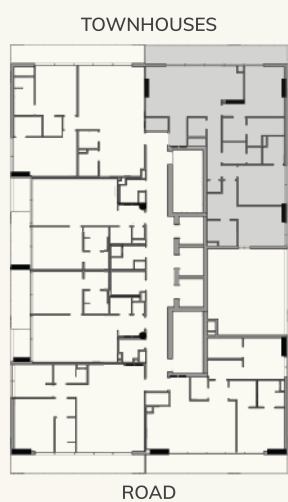


# MINATI<sup>1</sup> HOMES

By JANUSS DEVELOPERS







| INTERNAL AREA | BALCONY AREA | TOTAL AREA    |
|---------------|--------------|---------------|
| 1439.89 Sq.ft | 223.67 Sq.ft | 1663.56 Sq.ft |

Layout Features

- Entryway Closet
- Spacious Living Room
- Open plan Kitchen
- Maids Room with Bathroom
- Powder Room
- Laundry Room
- All Ensuite Bedrooms
- Minimal Wastage of Space
- Full Length Balcony
- Views of Sunset and Greenery
- Lots of Builtin-Wardrobe and Storage Spaces
- Double Sink in Master Bedroom-Bath

THREE BEDROOM & MAIDS  
06 SERIES



# MINATI<sup>1</sup> HOMES

By JANUSS DEVELOPERS





# MINATI<sup>1</sup>

H O M E S

FOR MORE INFORMATION PLEASE CONTACT



☎ +971 55 476 7630  
☎ +971 4 368 7878  
✉ info@afsrealestate.com  
🌐 www.afsrealestate.com



☎ +971 50 674 2020  
☎ +971 4 368 7878  
✉ info@dubricks.com  
🌐 www.dubricks.com